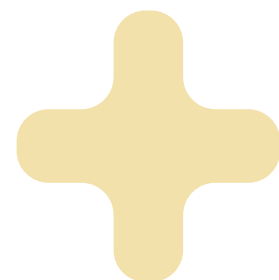


Outdoor Living Products



Contact Information



Alert Distributing, Inc.
16873 Fish Point Road SE
Prior Lake, MN 55372

General Inquires
Regional Sales Manager

Jarrold Goss
Jim Schroeder
Paul Elsing
Steve Daley

Accounting Department

Marketing Department

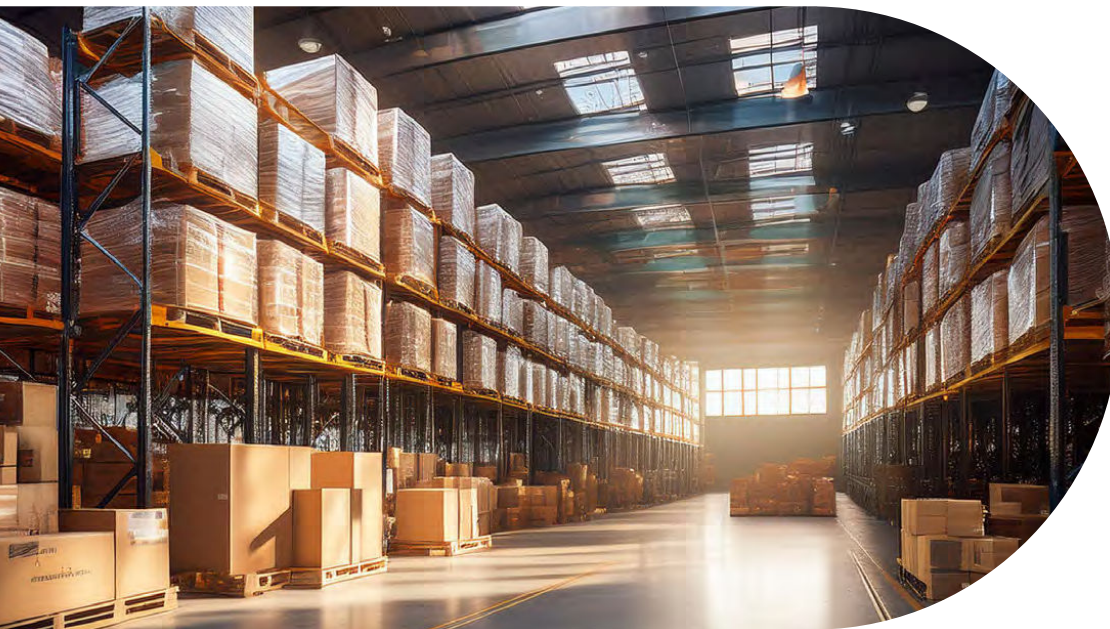
Customer Service & Technical Support Team

Office Phone: (952)-224-4070

IN, MI, OH, KY
MN, IA, ND, SD, WI
IL, IA, KS, MO, NE
IL, IN, WI

Email: sales@alertdistributing.com

jgoss@alertdistributing.com
jschroeder@alertdistributing.com
pelsing@alertdistributing.com
sdaley@alertdistributing.com
Dan Schroeder (952)-447-7003
Jim Schroeder (952)-447-7013
Tom Keating (952)-447-7011



EST. 2007 FAMILY OWNED & OPERATED

About us

Alert Distributing Inc. is a national supplier of hearth, home, and outdoor living products. We partner with leading manufacturers to offer the highest quality building materials and ensure customer satisfaction by developing working relationships.

Our goal is to help our customers succeed by providing solutions that fit the needs of their business. Our services include supply chain solutions, custom wholesale programs, and business support before and after the sale. Alert Distributing Inc. believes in taking care of the customer and being an active partner, to earn our customers' business. Thank you for the opportunity and we look forward to working with you!





Products by Brand

American Made Grills	4
Summerset Grills	8
WPPO Ovens	13
Wildfire Outdoors	14
Designer Series Kitchens	18
Firegear Outdoors	22
Isokern Fireplaces	30
Grand Canyon Gas Logs	32
Heatstrip Heaters	34
Outdeco Privacy Panels	36

Proudly
**MADE IN
THE U.S.A.**



www.americanmadegrills.com

New!

CUSTOMIZE YOUR ESTATE!

Your outdoor kitchen should reflect your style as much as it delivers performance. With interchangeable faceplates and grill grates, the Estate Series gives you the freedom to define its character. Every detail is crafted to maintain luxury presence while allowing you to make it distinctly your own.

FACEPLATES

Our new interchangeable faceplates customize the character of your grill and space. Whether heritage-inspired, modern, or patriotic, create a centerpiece that's distinctly yours.



Freedom Blue
FACE-FRBLUE-30 / FACE-FRBLUE-36
FACE-FRBLUE-42



Liberty Gold
FACE-GOLD-30 / FACE-GOLD-36
FACE-GOLD-42



Iron Clad
FACE-IRON-30 / FACE-IRON-36
FACE-IRON-42



Pin Stripes
FACE-PIN-30 / FACE-PIN-36
FACE-PIN-42

HYBRID GRILLS



ENC54

MUSCLE GRILL
ENCORE GRILL



MUS36

MORE FUEL, MORE FLAVOR

Maximum versatility, peak performance, and endless possibilities - the evolution of the modern grill is yours to ignite with the American Made Grills Hybrid Grill Series. The numbers on our gas-powered, wood-burning champions check out: more fuels mean more flavor.

Make dinner menu magic with a Multi-Fuel Tray System that burns charcoal, wood chunks, chips, and more. Enjoy superior American craftsmanship and a lifetime warranty that ensures it's the last grill you'll ever need.

Build one into the outdoor kitchen island of your dreams, or tie the patio together with a freestanding model. Either way, after one turn of a 22,000 BTU main burner, there's no turning back.

ESTATE GRILL



EST30



EST36



EST42

ATLAS GRILL

FIRE UP AN INSTANT CLASSIC

The Atlas Grill is a high-performance, luxury grill line made entirely in the USA. Elevate your outdoor lifestyle with its seamless design and superior performance. #304 stainless steel construction, interior and exterior lighting, and a dual-position warming rack system are just a few of the features that ensure you get the most out of your outdoor kitchen in style and functionality.



AT36-B

OUTDOOR KITCHEN ACCESSORIES

REFRIGERATION



24" KEG/FRIDGE COMBO UNIT



SINGLE TAP



DOUBLE TAP



ACCESS DOORS



18" SINGLE ACCESS DOOR



36" DOUBLE ACCESS DOOR



18" TRASH/FUEL STORAGE

DRAWERS & COMBOS



36" DOUBLE DRAWER COMBO



18" DOUBLE DRAWER



36" TRIPLE DRAWER COMBO



21" TRIPLE DRAWER

FEATURES:

- » MODULAR SIZES
- » SOFT CLOSE HINGES
- » RUBBER GASKETS
- » INTERIOR LIGHTING

*Hand Crafted
in America*



SUMMERSET

FEATURED

- 40" TRL PRO GRILL
- 42" VENT HOOD
- 36" DOUBLE ACCESS DOOR
- 24" OUTDOOR RATED WINE COOLER
- 24" OUTDOOR RATED DOUBLE DRAWER REFRIGERATOR



QUEST

30" | 36" | 42"



#304 STAINLESS STEEL CONSTRUCTION



13,000 BTU ANGLED INFRARED BACK BURNER



INTERIOR HALOGEN COOKING LIGHTS



EXTERIOR WATERFALL LED STRIP LIGHTING + WHITE TO RED BEZEL LIGHTING INDICATING ON/OFF BURNER STATE



18,000 BTU #304 STAINLESS STEEL U-TUBE BURNERS



MULTI-POSITION WARMING RACKS (QST30/36 X2 / QST42 X3)



TRL PRO

32" | 40"



#304 STAINLESS STEEL CONSTRUCTION



15,000 BTU INFRARED BACK BURNER



INTERIOR HALOGEN COOKING LIGHTS



EXTERIOR LED LIGHTING + WHITE TO RED BEZEL LIGHTING INDICATING ON/OFF BURNER STATE



20,000 BTU #304 STAINLESS STEEL U-TUBE BURNERS



8MM SQUARE COOKING GRATES

SIZZLER PRO

32" | 40"



SIZZLER

25" | 32" | 40"



GRIDDLE PRO



STAINLESS STEEL CONSTRUCTION



36,000 TOTAL BTU OUTPUT



8MM THICK, #304 STAINLESS STEEL COOKING SURFACE. 495 SQ. INCHES OF COOKING SURFACE



EXTERIOR LED LIGHTING + WHITE TO RED BEZEL LIGHTING INDICATING ON/OFF BURNER STATE



18,000 BTU STAINLESS STEEL U-TUBE BURNERS



GOLD STANDARD LIFETIME WARRANTY

RESORT GRILL



#304 STAINLESS STEEL CONSTRUCTION



18 & 16 GAUGE DOUBLE-LINED HOOD



HEAVY-DUTY 9MM ROUND COOKING GRATES



FLAME THROWER IGNITION



26,000 BTU #304 STAINLESS STEEL U-TUBE BURNERS



NO ELECTRICAL POWER REQUIRED, MULTI-FAMILY USE & COMMERCIAL APPLICATION FRIENDLY

REFRIGERATION ACCESSORIES STORAGE

ACCESS DOORS

Our doors give you elegant and convenient access to your island, utilities, and grill. These access doors feature #304 stainless steel body & handles, hingeless design, heavy-duty flange, reversible door mounting (excludes vented doors) and magnetic latches.



33" VENTED DOUBLE ACCESS DOOR
DD-33V



DOUBLE ACCESS DOOR (26", 30"
33", 36", 39", 42", 45")
DD-26 / DD-30 / DD-33 / DD-36
DD-39 / DD-42 / DD-45



VERTICAL ACCESS DOOR
(16", 18", 20")
DV-16 / DV-18 / DV-20



HORIZONTAL ACCESS DOOR
(22", 27")
DH-22 / DH-27

STORAGE DRAWERS

Our line of drawers are feature-packed storage options that ensure you get exactly what you need in your backyard set up. These drawers feature #304 stainless steel body & handles, heavy-duty flanges and soft closing drawers.



17" SINGLE DRAWER
DR1-17



17" DOUBLE DRAWER
DR2-17



17" TRIPLE DRAWER
DR3-17



17" VERTICAL 2-DRAWER & PAPER
TOWEL HOLDER COMBO
TDC-17



14" NARROW TRASH DRAWER
TD1-14

DOOR AND DRAWER COMBOS

These hingeless components with #304 stainless steel handles are specifically designed with versatility in mind. Whether you need a simple storage setup, LP tank drawer, paper towel holder, or weather-resistant dry storage shelving, these #304 stainless steel combos give you the options you need for a perfect outdoor setup.



2-DRAWER & ACCESS DOOR COMBO
(30", 32", 33", 36", 42")
DC2-30 / DC2-32 / DC2-33
DC2-36 / DC2-42



33" 3-DRAWER & ACCESS
DOOR COMBO
DC3-33



33" 2-DRAWER & TRASH OR LP
TANK PULLOUT DRAWER COMBO
DC2-33LP

VENT HOODS

VH36-2 / VH42-3 / VH48-3
VH60-3 / VH72-3



Protect your outdoor kitchen with our commercial-grade Vent Hoods. Many BBQ Islands and outdoor kitchens are made under a pergola or porch. A vent hood provides the protection you need to ensure a safe and reliable entertaining space for years to come. Each Vent Hood features durable double-lined #304 stainless steel construction for maximum strength and protection, stainless steel top/side mounting ducting, and a matching sleek design. The Vent Hood not only protects your outdoor kitchen but also protects the chassis of your built-in grill from corrosion, adding to the longevity of your grill. Use Summerset Vent Hoods to make your outdoor kitchen a safe and entertaining space for your family and friends to enjoy.

FEATURES

- » #304 STAINLESS STEEL CONSTRUCTION
- » 36" / 42" / 48" / 60" / 72"
- » 36" - 1000 CFM | 42" / 48" / 60" / 72" - 2000 CFM
- » DUAL VENTING / TOP OR REAR
- » SPACER KITS AVAILABLE
- » DUCT COVERS AVAILABLE
- » 1/2" MOUNTING BRACKET INCLUDED



HYBRID PIZZA OVEN




NEW PRODUCT

OV-HYB

Why choose between tradition and convenience when you can have both? The Summerset Hybrid Pizza Oven brings the soul of wood-fired cooking and the precision of gas together in one commercial-crafted centerpiece. Whether embracing the slow, smoky depth of a wood-fired crust or the instant heat and control of gas, this oven gives you the freedom to craft everything from artisan pizzas to slow-roasted meats, fire-roasted vegetables, and fresh-baked bread. Designed for those who appreciate the art of cooking, it transforms your outdoor space into a place where flavors deepen, techniques evolve, and every meal feels like an experience worth

 390 SQUARE INCHES OF COOKING SURFACE

 TEMPERATURE REACHES UP TO 932°F / 500°C

 40,000 BTUS OF COOKING POWER

 AMBIENT TEMP READOUT

 STAINLESS STEEL TUBE BURNER

 STAINLESS STEEL WOOD RACK + ASH CATCH



WPPPO Karma Series

Available in: 25" 32" 42" & 55"
Colors: Black, Red & Stainless Steel

FEATURES:

- Wood fired
- Outer dimensions: 23" L x 47.25" W x 72.5" H
- Thermal guard insulation
- R3 Interior- radiates, reflects, and retains heat to save you fuel and make cooking easier
- Comes with a stainless steel fire separator
- Interior Materials: 201 Stainless steel, 1 1/4 high heat fire brick
- Extra thick powder coat exterior
- Black Powder Coated Stand Included



WPPPO Traditional Series

Colors: Black or Red

FEATURES:

- Wood or gas powered
- Exterior dimensions: 31"l x 29.25"w x 76.25"h
- Door opening: 15.75"w x 7.75"h
- Insulation: WPPPO LLC fire blanket woven fiber
- Interior: 430 stainless steel 1 1/4 fire brick
- Exterior: high quality powder coat finish





EST. IN ARIZONA
WILDFIRE
OUTDOOR LIVING



THE RANCH PRO 30" GAS GRILL

- Available in Traditional or Black 304 Stainless Steel
 - 2 Cast Stainless Steel Burner
 - 42,000 total BTU
 - 685 sq. in. grilling are
 - Laser-cut stainless steel cooking grate
- #WFPRO30G-BSS-XX
#WFPRO30G-SS-XX



THE RANCH PRO 36" GAS GRILL

- Available in Traditional or Black 304 Stainless Steel
 - 3 Cast Stainless Steel Burner
 - 58,000 Total BTU
 - 833 sq. in. Grilling Are
 - Laser-Cut Stainless Steel Cooking Grates
- #WFPRO36G-BSS-XX
#WFPRO36G-SS-XX



THE RANCH PRO 42" GAS GRILL

- Available in Traditional or Black 304 Stainless Steel
 - 4 Cast Stainless Steel Burner
 - 74,000 Total BTU
 - 982 sq. in. Grilling Are
 - Laser-Cut Stainless Steel Cooking Grate
- #WFPRO42G-BSS-XX
#WFPRO42G-SS-XX





**Black 304
Stainless Steel**



**Double-walled
spring-assisted
hood.**



Seamless welded lid



**Illuminated LED
knob bezels**



Stylish soft edges



**THE RANCH PRO 30" GAS
GRILL 304 BLACK SS**

- Black 304 Stainless Steel
- 2 Cast Stainless Steel Burner
- 42,000 total BTU
- 685 sq. in. grilling are
- Laser-cut cooking grate
WF-PRO30G-RH



**THE RANCH PRO 36" GAS
GRILL 304 BLACK SS**

- Black 304 Stainless Steel
- 3 Cast Stainless Steel Burner
- 58,000 Total BTU
- 833 sq. in. Grilling Are
- Laser-Cut Cooking Grates
WF-PRO36G-RH



**THE RANCH PRO 42" GAS
GRILL 304 Black SS**

- Black 304 Stainless Steel
- 4 Cast Stainless Steel Burner
- 74,000 Total BTU
- 982 sq. in. Grilling Are
- Laser-Cut Cooking Grate
WF-PRO42G-RH



THE RANCH PRO 42" GRIDDLE

- Available in Traditional or Black 304 Stainless Steel
- 3 U-Shaped Stainless Steel Burners
- 48,000 Total BTUs
- 738 sq. in. Grilling Area
- LED Backlit Knob Bezels
- Heat Indicator Lights
- #WFPRO42GRD-BSS-XX
- #WFPRO42GRD-SS-XX



THE RANCH PRO 30" GRIDDLE

- Available in Traditional or Black 304 Stainless Steel
- 2 U-Shaped Stainless Steel Burners
- 35,000 Total BTUs
- 526 sq. in. Grilling Area
- LED Backlit Knob Bezels
- Heat Indicator Lights
- #WFPRO30GRD-BSS-XX
- #WFPRO30GRD-SS-XX



THE RANCH SIDE 15" GRIDDLE

- Available in Traditional or Black 304 Stainless Steel
- 1 U-Shaped Stainless Steel Burner
- 17,000 Total BTUs
- LED Backlit Knob Bezel
- #WFSDGRD-BSS-XX
- #WFSDGRD-SS-XX

BUILT-IN DOORS AND DRAWERS

You can never have too much storage. Keep your favorite grilling tools close at hand with your choice of drawers and doors in our signature Black or Traditional 304 Stainless Steel finish.



VERTICAL SINGLE DOOR

- 16" x 22"
 - Available in Traditional or Black 304 Stainless Steel
- #WVSD162-(SS/BSS)



HORIZONTAL SINGLE DOOR

- 27" x 20"
 - Available in Traditional or Black 304 Stainless Steel
- #WFHSD2720-(SS/BSS)



VERTICAL SINGLE DOOR

- 20" x 27"
 - Available in Traditional or Black 304 Stainless Steel
- #WVSD2027-(SS/BSS)



DOUBLE DOOR

- 30" x 21"
 - Available in Traditional or Black 304 Stainless Steel
 - Also available in 30" x 24"
- #WFDDR3021-(SS/BSS)
#WFDDR3024-(SS/BSS)



DOUBLE DOOR

- 38" x 21"
 - Available in Traditional or Black 304 Stainless Steel
 - Also available in 38" x 24"
- #WFDDR3821-(SS/BSS)
#WFDDR3824-(SS/BSS)



DOUBLE DRAWER

- 16" x 22"
 - Available in Traditional or Black 304 Stainless Steel
- #WFDDW1622-(SS/BSS)



TRIPLE DRAWER

- 19" x 26"
 - Available in Traditional or Black 304 Stainless Steel
- #WFTDW1926-(SS/BSS)



DOOR / DRAWER COMBO

- 30" x 21"
 - Available in Traditional or Black 304 Stainless Steel
 - Also available in 30" x 24"
- #WFDDWCOMBO3021-(SS/BSS)
#WFDDWCOMBO3024-(SS/BSS)



PULL OUT TRASH DRAWER

- 14" x 26"
 - Available in Traditional or Black 304 Stainless Steel
- #WFTRDW1426-(SS/BSS)



15" OUTDOOR FRIDGE

- 304 Stainless Steel Finish
 - Built-in / Slide-in Design
 - 3.2 CU.FT
- #WFR15



24" OUTDOOR FRIDGE

- 304 Stainless Steel Finish
 - Built-in Design
 - 5.3 CU.FT
- #WFR24



24" FRIDGE BLACK SLEEVE

- 304 Black Stainless Steel Finish
 - Fits #WFR-24-BS
- #WFR24SLV-BSS



24" DUAL DRAWER FRIDGE

- 304 Stainless Steel Finish
 - Built-in Design
 - 5.3 CU. FT
- #WFRDD24



24" DUAL DRAWER FRIDGE

- 304 Black Stainless Steel Finish
 - Fits #WFRDD-24-BSS
- #WFRDD24



ICE CHEST (SMALL)

- 304 Stainless Steel Finish
 - Built-in Design
 - 25" x 18" X 15"
- # WFSIC



ICE CHEST (LARGE)

- 304 Stainless Steel Finish
 - Built-in Design
 - 24 3/8" x 25 3/8" x 17"
- # WFLIC

REFRIGERATION AND ICE CHESTS



Reach for a cold drink or store fresh food; our fridge and ice chest add function and style to your outdoor kitchen.



Designer Series Kitchen Islands



TURN-KEY SOLUTIONS

1. Free-standing Ice Chest with Graphite Base and Champaign Top; Part # DSI-IC30-GPCH
2. NEW 36" Quest Series Grill made by Summerset Grills; Part # QST-36-NG/LP
3. 92" Designer Series Island with Graphite Base and Champaign Top with 15" Glass Door Refrigerator Part # DSI-92QST36-GPCH; *Fridge sold separately, Part #RFR-15G
4. Island Extension Cabinet, for additional counter space or appliances. Featuring new Hybrid Oven. Part # DSI-LADD-GPCH; *Hybrid Oven sold Separately, Part #OV-HYB/OV-HYBL

Compatible and Featuring Products From



Designer Series Islands



DSI-92SIZ32-GPCH (Dimensions: 92"Lx30"Wx36"H)
 -92" Kitchen Island, graphite color base & Champaign color counter-top.
 -Compatible with Summerset Grills and Sunfire Grills models:
 SZR-32-LP/NG, SZR-PRO32-LP/NG, SF-432-LP/NG
 *Grill sold separately



DSI-LADD-GPCH Dimensions: 56"Lx30"Wx36"H
 "L"-shape Cabinet Extensions
 Compatible with Refrigerator models
 RFR-24G, RFR-24S-A, RFR-24DR2-A
 *Refrigerator and Conversion Kit Sold Separately

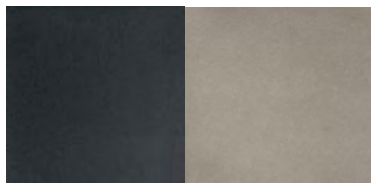
SA2DRD3620



SATP1526

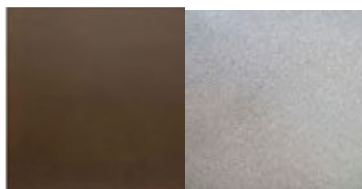


SADR1526



Graphite (GP)

Champaign (CH)



Copper Vein (CV)

Granite (GR)



DSI-IC30-GPCH
 Stand alone Ice Chest
 Dimensions: 30"Lx30"Wx24"H
 *Ice Chest Included



Small Grill Island Dimensions:
71"L x 30"W x 36"H



*Shown with optional fridge accessory kit.

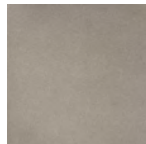
SIZZLER PRO



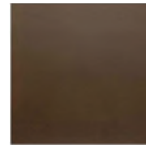
SIZZLER



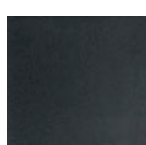
Granite (GR)



Champagne (CH)



Copper Vein (CV)



Graphite (GP)

Refrigeration Options



15" 3.2 Cu. OUTDOOR RATED REFRIGERATOR
RFR-15

- 32°F - 50°F Temperature Range
- #304 Stainless Steel Door & Handle



15" 3.2 Cu. OUTDOOR RATED REFRIGERATOR WITH GLASS DOOR
RFR-15G

- 32°F - 50°F Temperature Range
- Black Interior
- Triple-Glazed, Tinted Glass Door

Custom Builds Available





FIREGEAR

KALEA BAY OUTDOOR FIREPLACE



OFP-72LECO-NLED | Stainless Steel Kalea Bay - 72" Wide

FULL LED SPECTRUM

FEATURES

Full spectrum lighting (120VAC Required)

Model Sizes: 36" / 48" / 60" / 72" (all 16" tall opening)

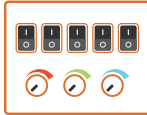
Burner & firebox constructed of weather/corrosion resistant 304 stainless steel.

Ecoflow Electronic Ignition System features built-in safety shutoff in case of loss of flame and auto-relight.

Control Center with each model housed in 304 Stainless Steel Cabinet.

Ships as Natural Gas (NG) or Liquid Propane (LP). Field Convertible to Liquid Propane (LP). *Conversion Kits sold separately.*

Tested & Approved to:
ANSI Z21.97-2017 • CSA 2.41-2017

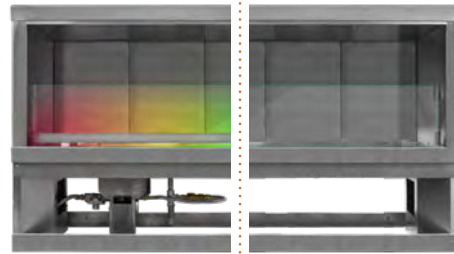


CONTROL PANEL

On/Off + Low/High + Continuous Pilot
+ Learn + LED On/Off

RGB Dials (3 in total) > Over 16 Million Colors!

TWO DIFFERENT STYLES FOR THE KALEA BAY



FULLY BATTERY OPERATED

FEATURES

Fully Battery-operated Ignition

Model Sizes: 48" / 60" (all 16" tall opening)

Burner & firebox constructed of weather/corrosion resistant 304 stainless steel.

Ecoflow Electronic Ignition System features built-in safety shutoff in case of loss of flame and auto-relight.

Control Center with each model housed in 304 Stainless Steel Cabinet.

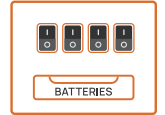
Ships as Natural Gas (NG) or Liquid Propane (LP). Field Convertible to Liquid Propane (LP). *Conversion Kits sold separately.*

Tested & Approved to:
ANSI Z21.97-2017 • CSA 2.41-2017

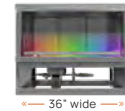
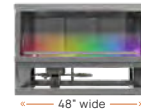
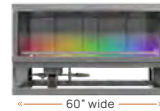
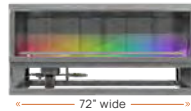
CONTROL PANEL

On/Off + Low/High
+ Continuous Pilot + Learn

Easy access to the Battery Tray

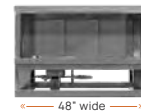
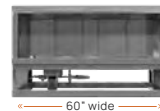


LED KALEA BAY MODELS



Model	Firebox Size	Gas Type	BTU Low	BTU High	Conv. Kit	See Through Conv. Kit	Weather Cover
OFP-36LECO-NLED	36" W x 16" H x 16" D	NG	18,500	31,000	OFP-36LECO-LPK	78002	OFP-36COV
OFP-48LECO-NLED	48" W x 16" H x 16" D	NG	24,500	43,500	OFP-48LECO-LPK	78004	OFP-48COV
OFP-60LECO-NLED	60" W x 16" H x 16" D	NG	36,000	50,000	OFP-60LECO-LPK	78006	OFP-60COV
OFP-72LECO-NLED	72" W x 16" H x 16" D	NG	42,000	65,000	OFP-72LECO-LPK	78008	OFP-72COV
OFP-36LECO-PLED	36" W x 16" H x 16" D	LP	18,500	31,000	OFP-36LECO-LPK	78002	OFP-36COV
OFP-48LECO-PLED	48" W x 16" H x 16" D	LP	24,500	43,500	OFP-48LECO-LPK	78004	OFP-48COV
OFP-60LECO-PLED	60" W x 16" H x 16" D	LP	36,000	50,000	OFP-60LECO-LPK	78006	OFP-60COV
OFP-72LECO-PLED	72" W x 16" H x 16" D	LP	42,000	65,000	OFP-72LECO-LPK	78008	OFP-72COV

BATTERY KALEA BAY MODELS



Model	Firebox Size	Gas Type	BTU Low	BTU High	Conv. Kit	See Through Conv. Kit	Weather Cover
OFP-48LECO-N	48" W x 16" H x 16" D	NG	24,500	43,500	OFP-48LECO-LPK	78010	OFP-48COV
OFP-60LECO-N	60" W x 16" H x 16" D	NG	36,000	50,000	OFP-60LECO-LPK	78011	OFP-60COV
OFP-48LECO-P	48" W x 16" H x 16" D	LP	24,500	43,500	OFP-48LECO-LPK	78010	OFP-48COV
OFP-60LECO-P	60" W x 16" H x 16" D	LP	36,000	50,000	OFP-60LECO-LPK	78011	OFP-60COV

SEE-THROUGH CONVERSION KITS

Each conversion kit includes a 2-Piece Glass Windshield Kit, Stainless Steel Hood, and LED Tray & Strips (only for LED Models).

Model	Description
78002	For the 36" LED Kalea Bay (NG or LP)
78004	For the 48" LED Kalea Bay (NG or LP)
78006	For the 60" LED Kalea Bay (NG or LP)
78008	For the 72" LED Kalea Bay (NG or LP)
78010	For the 48" BATTERY Kalea Bay (NG or LP)
78011	For the 60" BATTERY Kalea Bay (NG or LP)

WEATHER COVERS

The Kalea Bay Weather Cover is a panel that locks on to the Firebox - it's constructed of 304 Stainless Steel.

Model	Description
OFP-36COV	For the 36" Kalea Bay (NG or LP)
OFP-48COV	For the 48" Kalea Bay (NG or LP)
OFP-60COV	For the 60" Kalea Bay (NG or LP)
OFP-72COV	For the 72" Kalea Bay (NG or LP)

OPTIONAL ACCESSORIES

The items listed below are optional, as the Kalea Bay comes standard with a 10" Wire Harness

Model	Description
77111	10' long, 6-pin LED Extension wire harness - for LED Models only
77161	10' long, 8-pin Mod Extension wire harness for LED and Non-LED Models
VCS-ECOBUEXT120	2-pin battery pack extension wire to extend the wire on a battery pack of the NON-LED Kalea Bay.



Kalea Bay LP Conversion Kits (Both LED & BATTERY models)

36" Kalea Bay > OFP-36LECO-LPK 60" Kalea Bay > OFP-60LECO-LPK
48" Kalea Bay > OFP-48LECO-LPK 72" Kalea Bay > OFP-72LECO-LPK



Media for the Kalea Bay

Rock Media, Glass, and/or Log Sets are **NOT INCLUDED** with a Kalea Bay. You can find our full selection of Fire Jewelry on page: **23**

SANCTUARY SERIES

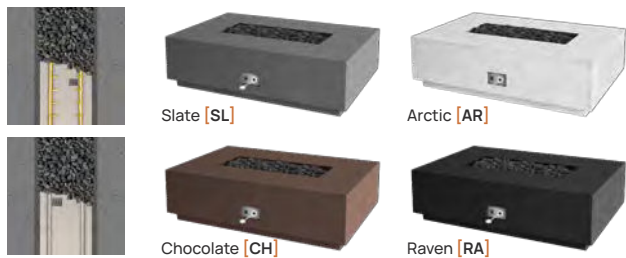
GFRC FIRE TABLES & FIRE BOWLS



SAN176-TPSI-N-CH
Raven color GFRC Enclosure with TPSI Burner System

Fire Tables **SANCTUARY 1**

GFRC Fire Table offered in 56" and 76" lengths
Available with Pro Brass or Stainless Steel Burner Systems
Colors Available: Slate - Arctic - Chocolate - Raven

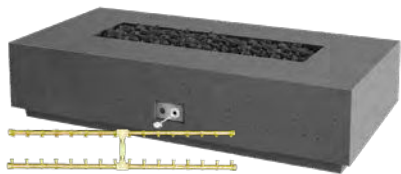


Fire Bowls **SANCTUARY 2 & 3**

GFRC Fire Bowls offered in 29" and 39" diameters
Available with Pro Brass or Stainless Steel Burner Systems
Colors Available: Slate - Arctic - Chocolate - Raven

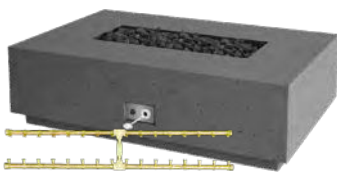


Sanctuary 1 - 76 » Pro Series Burner System Pro Brass Sanctuary Series are designed to be NG or LP from the Factory. *We do NOT offer Gas Conversion Kits.*



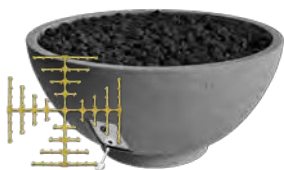
Model	Ignition	Dimensions	BTU	BTU
SAN176-PSAWS-N-[]	AWS	76" L x 38" W x 16" H	150,000	NG
SAN176-PSAWS-P-[]	AWS	76" L x 38" W x 16" H	160,000	LP
SAN176-PSTPSI-N-[]	TPSI	76" L x 38" W x 16" H	150,000	NG
SAN176-PSTPSI-P-[]	TPSI	76" L x 38" W x 16" H	160,000	LP
SAN176-PSMT-N-[]	MT	76" L x 38" W x 16" H	150,000	NG
SAN176-PSMT-P-[]	MT	76" L x 38" W x 16" H	160,000	LP

Sanctuary 1 - 56 » Pro Series Burner System Pro Brass Sanctuary Series are designed to be NG or LP from the Factory. *We do NOT offer Gas Conversion Kits.*



Model	Ignition	Dimensions	BTU	Gas Type
SAN1-PS30LHAWS-N-[]	AWS	56" L x 38" W x 16" H	80,000	NG
SAN1-PS30LHAWS-P-[]	AWS	56" L x 38" W x 16" H	110,000	LP
SAN1-PS30LHTPSI-N-[]	TPSI	56" L x 38" W x 16" H	80,000	NG
SAN1-PS30LHTPSI-P-[]	TPSI	56" L x 38" W x 16" H	110,000	LP
SAN1-PS30LHMT-N-[]	MT	56" L x 38" W x 16" H	80,000	NG
SAN1-PS30LHMT-P-[]	MT	56" L x 38" W x 16" H	110,000	LP

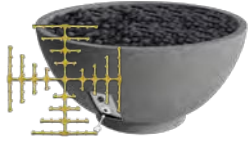
Sanctuary 2 » Pro Series Burner System Pro Brass Sanctuary Series are designed to be NG or LP from the Factory. *We do NOT offer Gas Conversion Kits.*



Model	Ignition	Dimensions	BTU	Gas Type
SAN2-34DPSAWS-N-[]	AWS	39" Diameter x 18" H	145,000	NG
SAN2-34DPSAWS-P-[]	AWS	39" Diameter x 18" H	124,000	LP
SAN2-34DPSTPSI-N-[]	TPSI	39" Diameter x 18" H	145,000	NG
SAN2-34DPSTPSI-P-[]	TPSI	39" Diameter x 18" H	124,000	LP
SAN2-34DPSMT-N-[]	MT	39" Diameter x 18" H	145,000	NG
SAN2-34DPSMT-P-[]	MT	39" Diameter x 18" H	124,000	LP

Sanctuary 3 » Pro Series Burner System

Pro Brass Sanctuary Series are designed to be NG or LP from the Factory. *We do NOT offer Gas Conversion Kits.*



Model	Ignition	Dimensions	BTU	Gas Type
SAN3-26DPSAWS-N-[]	AWS	29" Diameter x 14" H	50,000	NG
SAN3-26DPSAWS-P-[]	AWS	29" Diameter x 14" H	42,000	LP
SAN3-26DPSTPSI-N-[]	TPSI	29" Diameter x 14" H	50,000	NG
SAN3-26DPSTPSI-P-[]	TPSI	29" Diameter x 14" H	42,000	LP
SAN3-26DPSMT-N-[]	MT	29" Diameter x 14" H	50,000	NG
SAN3-26DPSMT-P-[]	MT	29" Diameter x 14" H	42,000	LP

Sanctuary 76 » Stainless Steel Burner System



Model	Ignition	Dimensions	BTU	LP Conv. Kit
SAN176-AWS-N-[]	AWS	76" L x 38" W x 16" H	125,000	OAS-LPK31 + FG-AWS-PBO-P
SAN176-TPSI-N-[]	TPSI	76" L x 38" W x 16" H	125,000	TPSI-LPK31
SAN176-TPSI-P-[]	TPSI	76" L x 38" W x 16" H	125,000	Sold as LP > N/A
SAN176-MT-N-[]	MT	76" L x 38" W x 16" H	125,000	OAS-LPK31

Sanctuary 1 » Stainless Steel Burner System



Model	Ignition	Dimensions	BTU	LP Conv. Kit
SAN1-30LHAWS-N-[]	AWS	56" L x 38" W x 16" H	100,000	OAS-LPK35 + FG-AWS-PBO-P
SAN1-30LHAWS-P-[]	AWS	56" L x 38" W x 16" H	100,000	Sold as LP > N/A
SAN1-30LHTPSI-[]	TPSI	56" L x 38" W x 16" H	100,000	TPSI-LPK35
SAN1-30LHTPSI-[]-P	TPSI	56" L x 38" W x 16" H	100,000	Sold as LP > N/A
SAN1-30LHMT-N-[]	MT	56" L x 38" W x 16" H	100,000	OAS-LPK35

Sanctuary 2 » Stainless Steel Burner System



Model	Ignition	Dimensions	BTU	LP Conv. Kit
SAN2-34DBSAWS-N-[]	AWS	39" Diameter x 18" H	125,000	OAS-LPK31 + FG-AWS-PBO-P
SAN2-34DBSAWS-P-[]	AWS	39" Diameter x 18" H	125,000	Sold as LP > N/A
SAN2-34DBSTPSI-[]	TPSI	39" Diameter x 18" H	125,000	TPSI-LPK31
SAN2-34DBSTPSI-[]-P	TPSI	39" Diameter x 18" H	125,000	Sold as LP > N/A
SAN2-34DBSMT-[]	MT	39" Diameter x 18" H	125,000	OAS-LPK31

Sanctuary 3 » Stainless Steel Burner System



Model	Ignition	Dimensions	BTU	LP Conv. Kit
SAN3-26DBSAWS-N-[]	AWS	30" Diameter x 14" H	75,000	OAS-LPK41 + FG-AWS-PBO-P
SAN3-26DBSAWS-P-[]	AWS	30" Diameter x 14" H	75,000	Sold as LP > N/A
SAN3-26DBSTPSI-[]	TPSI	30" Diameter x 14" H	75,000	TPSI-LPK41
SAN3-26DBSTPSI-[]-P	TPSI	30" Diameter x 14" H	75,000	Sold as LP > N/A
SAN3-26DBSMT-[]	MT	30" Diameter x 14" H	75,000	OAS-LPK41

LIQUID PROPANE TANK HOUSING



GFRC Enclosure for a Standard Propane Tank

Model	Dimensions
SANCTUARY-LPTE-[]	20" W x 20 1/2" H

WEATHER COVER



Model	Dimensions
COVER-SANI-76	For the Sanctuary 76
COVER-SANI	For the Sanctuary 1
COVER-SAN2	For the Sanctuary 2
COVER-SAN3	For the Sanctuary 3

Media for the Sanctuary Series
 Rock Media, Glass, and/or Log Sets are **NOT INCLUDED** with the Sanctuary Series.
 You can find our full selection of Fire Jewelry on page: **23**



FPB-44DBS36MT-N | Round Flat Match Throw Burner System inside a custom brick surround

STAINLESS STEEL SRW/PAVER KITS

One model number - each package provides the all-in-one solution for upgrading to a gas fire pit.

All models are sold as Natural Gas. You can purchase a NG to LP Conversion Kit.

To the right you will find a representation of what's in the box of each package.



SQUARE MODELS



ROUND MODELS



LINEAR MODELS

Round » Flat » MT STAINLESS STEEL SRW/PAVER KITS

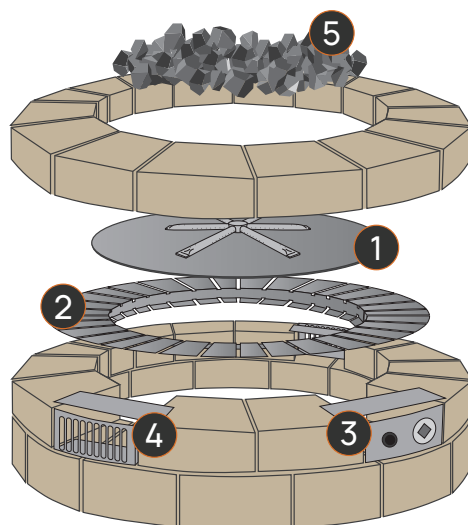


Model	Fits	Burner System	Flexframe	Control Panel	Vent Kit	Media	LP Conv. Kit
FPB-26D22MTN-PK	26" to 29"	FPB-26DBS22MT-N	FLEXFRAME-SS	PAVER-CP-MT	PAVER-VENT-4	FG-LAVA-10 (x3)	OAS-LPK31
FPB-29D22MTN-PK	29" to 32"	FPB-29DBS22MT-N	FLEXFRAME-SS3	PAVER-CP-MT	PAVER-VENT-4	FG-LAVA-40	OAS-LPK31
FPB-34D31MTN-PK	34" to 37"	FPB-34DBS31MT-N	FLEXFRAME-SS3	PAVER-CP-MT	PAVER-VENT-4	FG-LAVA-40 + FG-LAVA-10	OAS-LPK26
FPB-34D31MTN-PK2	34" to 37"	FPB-34DBS31MT-N	FLEXFRAME-SS3	PAVER-CP-MT	PAVER-VENT-6	FG-LAVA-40 + FG-LAVA-10	OAS-LPK26
FPB-39DBS36MTN-PK	39" to 42"	FPB-39DBS36MT-N	FLEXFRAME-SS3	PAVER-CP-MT	PAVER-VENT-4	FG-LAVA-40 + FG-LAVA-10	OAS-LPK12
FPB-44DBS36MTN-PK	44" to 47"	FPB-44DBS36MT-N	FLEXFRAME-SS3	PAVER-CP-MT	PAVER-VENT-4	FG-LAVA-40 + FG-LAVA-10 (x2)	OAS-LPK12

FIREGEAR BURNER PACKAGE FPB-34D31MTN-PK



Check out the video on the MT Package



PACKAGE CONTAINS

1 BURNER SYSTEM

Model: FPB-34DBS31MT-N



Pan: 34" diameter
Burner: 31" in diameter
175,000 BTU
Match light ignition.

3 CONTROL PANEL

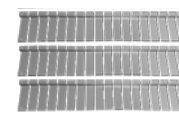
Model: PAVER-CP-MT



SRW control panel kits provides a convenient way to install key valves in landscape block. All stainless steel construction. Includes a lintel bar for added support.

2 FLEXFRAME

Model: FLEXFRAME-SS3



(3) pieces of 304 stainless steel that allows you to fill the gap between the inside opening and the size of the burner. Simplifies installation and any maintenance needed.

4 VENT KIT

Model: PAVER-VENT-4LNTS



Paver vents provide required 18 square inches of cross ventilation. Reduces making cuts and includes a lintel for added support. Sold as a pair. All stainless steel construction.

5 MEDIA

Model: FG-LAVA-40 + FG-LAVA-10



Includes Lava Rock: 1" - 2" diameter black lava rock. Used to cover burner that creates air to gas mix for optimal flame size and appearance.

See all our Jewelry options:



Square » Flat » MT STAINLESS STEEL SRW/PAVER KITS

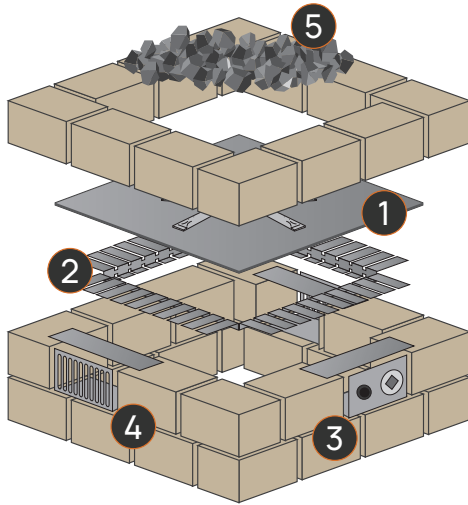


Model	Fits	Burner System	Flexframe	Control Panel	Vent Kit	Media	LP Conv. Kit
FPB-25SF22MTN-PK	25" to 28"	FPB-25SFBS22MT-N	FLEXFRAME-SS	PAVER-CP-MT	PAVER-VENT-4	FG-LAVA-10 (x3)	OAS-LPK31
FPB-30SF22MTN-PK	30" to 33"	FPB-30SFBS22MT-N	FLEXFRAME-SS3	PAVER-CP-MT	PAVER-VENT-4	FG-LAVA-40	OAS-LPK31
FPB-34SF31MTN-PK	34" to 37"	FPB-34SFBS31MT-N	FLEXFRAME-SS3	PAVER-CP-MT	PAVER-VENT-4	FG-LAVA-40 + FG-LAVA-10	OAS-LPK26

**FIREGEAR BURNER PACKAGE
FPB-34SF31MTN-PK**



Check out the video on the MT Package



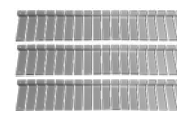
PACKAGE CONTAINS

1 BURNER SYSTEM
Model: FPB-34SFBS31MT-N



Pan: 34" length
Burner: 31" in diameter
175,000 BTU
Match light ignition.

2 FLEXFRAME
Model: FLEXFRAME-SS3



(3) pieces of 304 stainless steel that allows you to fill the gap between the inside opening and the size of the burner. Simplifies installation and any maintenance needed.

3 CONTROL PANEL
Model: PAVER-CP-MT



SRW control panel kits provides a convenient way to install key valves in landscape block. All stainless steel construction. Includes a lintel bar for added support.

4 VENT KIT
Model: PAVER-VENT-4LNTS



Paver vents provide required 18 square inches of cross ventilation. Reduces making cuts and includes a lintel for added support. Sold as a pair. All stainless steel construction.

5 MEDIA
Model: FG-LAVA-40 + FG-LAVA-10



Includes Lava Rock: 1" - 2" diameter black lava rock. Used to cover burner that creates air to gas mix for optimal flame size and appearance.

See all our Jewelry options:



Linear » Flat » MT STAINLESS STEEL SRW/PAVER KITS



Model	Fits	Burner System	Flexframe	Control Panel	Vent Kit	Media	LP Conv. Kit
LOF-3614FHMTN-PK	36" to 40" L, 14" to 18" W	LOF-3614FHMT-N	FLEXFRAME-SS3	PAVER-CP-MT	PAVER-VENT-4	FG-LAVA-40 + FG-LAVA-10	OAS-LPK31
LOF-4814FHMTN-PK	48" to 52" L, 14" to 18" W	LOF-4814FHMT-N	FLEXFRAME-SS3	PAVER-CP-MT	PAVER-VENT-4	FG-LAVA-40 + FG-LAVA-10 (x2)	OAS-LPK29
LOF-6016FHMTN-PK	60" to 64" L, 16" to 20" W	LOF-6016FHMT-N	FLEXFRAME-SS3	PAVER-CP-MT	PAVER-VENT-4	FG-LAVA-40 + FG-LAVA-10 (x3)	OAS-LPK26



SRW/PAVER FIRE PIT ACCESSORIES

FLEXFRAME » Bridge the gap!



Allows you the flexibility to fill the gap between the fire pit structure and the pan. You can easily remove the burner without disturbing the structure. Flexible and easy to adapt for round, square, and rectangular fire pits.



FLEXFRAME-PRO3
Pro Series - Wider Version of the FLEXFRAME. Designed for Larger Round, Square and Linear Burner Systems - Constructed of 16 Gauge 304 Stainless Steel
(3) 44" pieces per package



FLEXFRAME-SS3
Constructed of 16 Gauge 304 Stainless Steel. Engineered to protect against outdoor elements including salt water environments
(3) 44" pieces per package



FLEXFRAME-SS
Constructed of 16 Gauge 304 Stainless Steel. Engineered to protect against outdoor elements including salt water environments
(2) 44" pieces per package

SRW/PAVER VENT KITS



COMPATIBLE WITH



PAVER-VENT-4-LNTS
Stainless steel SRW vent kit with lintel. Each vent provides 18 square inches of ventilation.

INCLUDES >
Two (2) 3 5/8" H x 8" W vents with mounting plate, extension plate extends overall size up to 10" W
Two (2) Tapcon® concrete anchors and vent mounting hardware with spacers
Two (2) Lintels 12" L x 3" W (16 gauge galvanized steel)

PAVER-VENT-6-LNTS
Stainless steel SRW vent kit with lintel. Each vent provides 18 square inches of ventilation.

INCLUDES >
Two (2) 5 5/8" H x 8" W vents with mounting plate, extension plate extends overall size up to 10" W
Two (2) Tapcon® concrete anchors and vent mounting hardware with spacers
Two (2) Lintels 12" L x 3" W (16 gauge galvanized steel)

LUME INSERT » Smoke-Less Fire Pit Insert

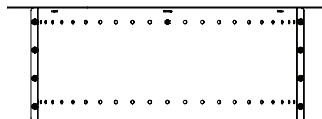


Image Shown
LUME-34R > inside paver blocks

- Unique design for less smoke
- Insert into SRW Block, Bricks, or other Non-Combustible Material

Transform your ordinary paver fire pit into an extraordinary smokeless sanctuary with our **LUME Insert** > A Metal Smokeless Fire Pit insert. Enjoy the mesmerizing dance of flames without the annoyance of smoke, and create unforgettable moments in your backyard oasis. Upgrade your outdoor experience with ease, style, and the ultimate comfort of a smoke-free ambiance.

Model	Rim Outer Diam.	Rim Inner Diam.	Base Outer Diam.	Height	Weight	Fits Openings
LUME-29R	34"	26"	29"	12"	21 lbs.	29" - 32"
LUME-34R	39"	31"	34"	12"	25 lbs.	34" - 37"
LUME-36R	41"	34"	36"	12"	26 lbs.	36" - 39"



**OPTIONAL
STAINLESS
STEEL LIDS**

- MODELS >** LID-LUME-29R
LID-LUME-34R
LID-LUME-36R

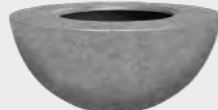
LUME SURROUND » Smoke-Less Fire Pit Inside of a GFRC Enclosure



WOOD



METAL SMOKE-LESS FIRE PIT



GFRC ENCLOSURE



LUME SURROUND



INCLUDED LID: LID-LUME-MS-A
Stainless steel protected lid for the Lume Surround.



Image Shown
LUME-SUR1-SL

Introducing the **LUME Surround**, the ultimate combination of style and functionality. Experience the magic of a smokeless fire pit enclosed within a stunning GFRC bowl, creating an exquisite centerpiece for your outdoor living space.

**Color
OPTIONS**



Slate
SL



Raven
RA

Model	Color	Overall Dimensions	Base Width	Interior Diameter
LUME-SUR1-RA	Slate	42" W x 18" H	20" W	23 1/2" W
LUME-SUR1-SL	Raven	42" W x 18" H	20" W	23 1/2" W

OPTIONAL COVER: COV-SUR1 > 100% water resistant, UV-Protected to prevent fading, custom fitted and features a soft flannel backing, spring cinch lock.

LUME ROUND BLACK SMOKE-LESS INSERT



AVAILABLE IN 24" & 30" DIAMETERS
24: LUME-24R-BK | 30: LUME-30R-BK

FEATURES

- Double Wall
- Black high temperature painted carbon steel
- Flat lid included
- 24" Cutout dimensions: fits 27"-33"
- 30" Cutout dimensions: fits 32"-40"



WOOD BURNING



100% Commercial Grade
STAINLESS STEEL



SRW/PAVERS COMPATIBLE

LUME ROUND STAINLESS STEEL SMOKE-LESS INSERT



AVAILABLE IN 24" & 30" DIAMETERS 24: LUME-24R-SS 30:LUME-30R-SS

FEATURES

- Double Wall
- Flat lid included
- Available in 24" or 30" diameters
- 24" Cutout dimensions: fits 27"-33"
- 30" Cutout dimensions: fits 32"-40"

LUME SQUARE BLACK SMOKE-LESS INSERT



LUME-24SQ-BK

FEATURES

- Double Wall
- Black high temperature painted carbon steel
- Flat lid included
- 24" Square
- Cutout dimensions: fits 27"-33"

LUME SQUARE STAINLESS STEEL SMOKE-LESS INSERT

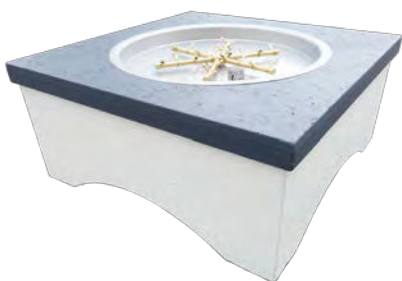


LUME-24SQ-SS

FEATURES

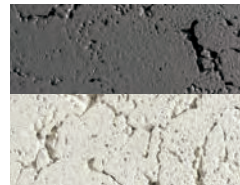
- Double Wall
- Flat lid included
- 24" Square
- Cutout dimensions: fits 27"-33"

LUME SURROUND 2

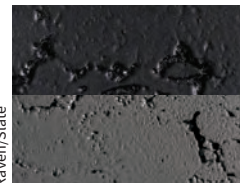


BASE	TOP	HEIGHT	LBS/PALLET
38"x 38"	42½" x 42½"	18"	300

Stocked 2-Tone Colors:



Slate/Acrylic



Raven/Slate



Burner Options:



24" LUME Smoke-less Black Steel
*Lid Included



24" LUME Smoke-less Stainless Steel
*Lid Included



29" Round Drop-in TPSI Gas

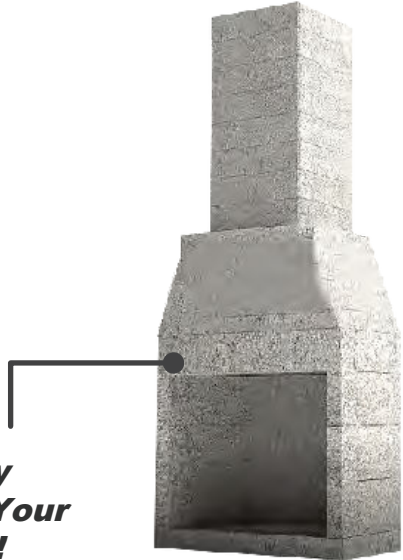


29" Pro Series Round Drop-in AWS Gas
*Must Order Gas Specific

- Glass Fiber Reinforced Concrete (GFRG) Surround
- Compatible with wood and gas burning inserts.
- Solid Color Options: GREY, WHITE, BLACK, BRONW
- Two-tone Color Options Available



ISOKERN®



All Fuel - Wood - Gas

Add Any Veneer of Your Choice!

Outdoor Fireplaces

Any Size Standard or Magnum up to 48"

An outdoor fireplace design can help you turn your outdoor space into a warm, relaxing setting. Add value, comfort, and style to your home with the outdoor fireplace ideas that only Isokern offers. Each outdoor fireplace kit comes complete with everything you need! From our mono flue chimney, to mortar, firebrick, and more!



2 Burner Sizes 18in-42in



3 Burner Sizes 18in-42in



Complete Your Isokern with our Outdoor Installation Kit

Kit Includes:



ISOSET
FireBrick
Mortar



MP50
Fireplace
Mortar



EM40
Mono Flue
Chimney



50009
Mono Flue
Cap



ISOKERN
FireBrick

Cream
Full Size Brick

*Mono Flue
Chimney*

***Recommended
4' of Mono Flue,
additional Mono
Flue available
for purchase***





ISOPANEL Modular Construction

8ft • 10ft • L-Shaped • Custom

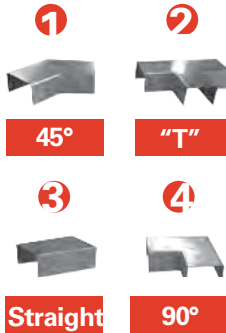
Earthcore has streamlined the construction of building the classic culinary outdoor kitchen for quick assembly. Using our Panels and Clips, building a beautiful, durable and practical outdoor kitchen is easier than ever. The Isopanel panels are also compatible with the Iso'ven system for added kitchen system options.



ISOPANEL DIMENSIONS
34" h x 24" w x 3" d



EACH PANEL
100lbs



8ft Kitchen



10ft Kitchen



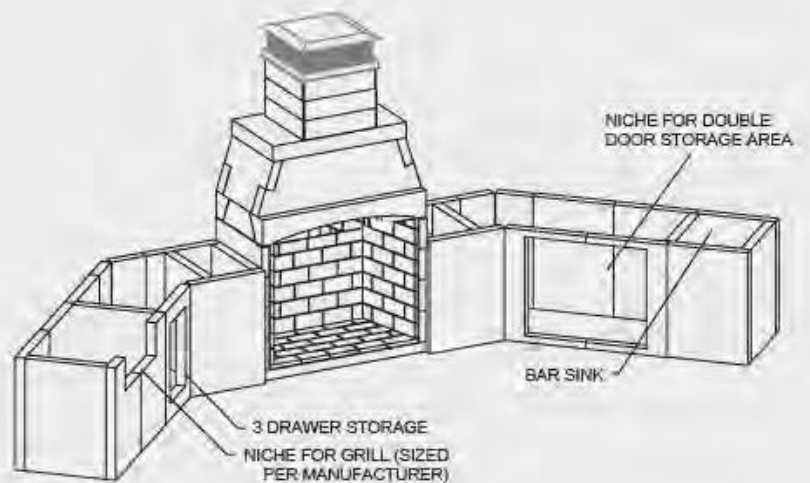
L-Shaped Kitchen



C. The Magnum with Isopanel Kitchen

What You'll Need:

- 1 - ISO KERIN 48 Magnum
- 28 - ISOPANEL Kitchen Panels
- 6 - T-Clips
- 8 - STRAIGHT Clips
- 4 - 45° Clips
- 8 - 90° Clips
- 5 - EARTH CORE Adhesive Buckets
- 130R/260H FireBrick
- 2 - ISOSET Mortar Buckets
- 6 Sections - EM 40 Mono Flue
- 1 - EM 40 Mono Flue Cap



GRAND CANYON GAS LOGS



AZ Weathered Oak



Arizona Weathered Oak (AWO) available in 18", 21", 24", 30", 36", 42", 48" and 60". Burner compatibility 2 & 3 burner.

Arizona Juniper



Arizona Juniper (AJ) available in 18", 21", 24", 30", 36" and 42". Burner compatibility 2 & 3 burner. Item- AJ##LOGS

Quaking Aspen



Quaking Aspen (ASPEN) available in 18", 24", 30", 36", 42", 48" and 60". Burner compatibility 2 & 3 burner. Item- ASPEN##LOGS

2 Burner Stainless Steel



Available Sizes: 18", 21", 24", 30", 36", 42", 48"* and 60"*
* Height of 3-Burner

Front View & See-Through Item- 2BRN-##-SS

3 Burner Stainless Steel



Available Sizes: 18", 21", 24", 30", 36" and 42"
Front View & See-Through
Item- 3BRN-##-SS

Glass Stainless Steel



Available Sizes: 18", 24", 30", 36", 42", 48" and 60"

AZ Weathered Oak

CHARRED



Arizona Weathered Oak Charred (AWOC) available in 18", 24", 30", 36" and 42".
Burner compatibility 2 & 3 burner.

Fire Pit Stacks



Fire Pit Stack available in 18", 24", 30", 36", and 48".
Available in Tee Pee Stack, Flat Stack & Round Tall Stack.

Blue Pine Split



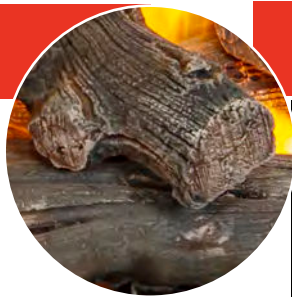
Blue Pine Split (BPS) available in 18", 24" and 30".
Burner compatibility 2 & 3 burner.

Linear Driftwood



Linear Western Driftwood (DW) available in 24", 36", 48", 60", 72", 84", 96", 108" and 120".

Western Driftwood



Western Driftwood (DRIFTWOOD) available in 18", 21", 24", 30", 36" and 42". Burner compatibility 2 & 3 burner.

AZ Weathered Oak JUMBO



Jumbo Arizona Weathered Oak (JUMBOAWO) available in 36", 42", 48" and 60".
Jumbo Slimline available 24" - 120". Only 21" deep burners.

Optional Fire-Pit Gas Log Sets

18"- 24" 9 pcs. Set or 30"- 36" 16 pcs. Set



Arizona Weathered Oak Gas Log Set
Item- FPAWO-18/24



Western Driftwood Gas Log Set
Item- FPDW-18/24



Aspen Birch Gas Log Set
Item- FPASP-18/24

Fiber Cannon Balls



2/4/6 inch Cannon Balls
Black, Dark Gray or Silver
Item- CB6-4-##

HEATSTRIP® ≡ MAX DC COMMERCIAL

Introducing the New MAX DC, designed to deliver high radiant infrared heat, making it ideal for exposed outdoor areas. Its dual element design ensures a compact unit with maximum efficiency. Perfect for commercial settings such as hospitality venues, restaurants, and warehouses, the MAX DC provides instant warmth.

- Commercial Electric Infrared Heater.
- 2 models available X- THX4000DC (4000W) & X- THX6000DC (6000W).
- Dual heat infrared carbon element technology and upgraded heat reflector design that delivers world class performance.
- High radiant infra-red temperature which is perfect for exposed outdoor sites.
- Must be hard-wired.
- Min mounting height: 2.4m, 7'10½"
- Ideal mounting height: 2.5-2.8m, 8' 2½" - 9' 2¼"
- Max mounting height: 3m, 9' 10⅛"
- 3-year commercial warranty.



Optional mounting accessories



Standard mounting bracket ZBRAK-132B included can be used for wall or ceiling mounting. Bracket can also be used to suspend the heater using chains or wires.



Extension Mount Poles allow units to be lowered from high ceilings.



Standard Mounting Bracket ZBRAK-132B included with the heater.

Materials of Construction: Anodised alloy casing and endcaps, with powder coated grille (black). The product is IPXS rated. Voltage Nominal at 50 - 60 Hertz, Single Phase.

PRODUCT SELECTOR

CLASSIC

Application

- Pergola / protected alfresco
- Difficult to heat indoor areas
- Cafe, garage / shed

Min Mounting Height
Ideal Mounting Height
Max Mounting Height

2.1m, 6'10³/₄"
2.3 - 2.5m, 7'6¹/₂" - 8'2³/₈"
2.7m 8' 10³/₈"



CLASSIC WHITE

Application

- Pergola / protected alfresco
- Difficult to heat indoor areas
- Cafe, garage / shed

Min Mounting Height
Ideal Mounting Height
Max Mounting Height

2.1m, 6'10³/₄"
2.3 - 2.5m, 7'6¹/₂" - 8'2³/₈"
2.7m 8' 10³/₈"



CLASSIC WITH REMOTE & APP

Application

- Pergola / protected alfresco
- Difficult to heat indoor areas
- Cafe, garage / shed

Min Mounting Height
Ideal Mounting Height
Max Mounting Height

2.1m, 6'10³/₄"
2.3 - 2.5m, 7'6¹/₂" - 8'2³/₈"
2.7m 8' 10³/₈"



CLASSIC WITH REMOTE & APP WHITE

Application

- Pergola / protected alfresco
- Difficult to heat indoor areas
- Cafe, garage / shed

Min Mounting Height
Ideal Mounting Height
Max Mounting Height

2.1m, 6'10³/₄"
2.3 - 2.5m, 7'6¹/₂" - 8'2³/₈"
2.7m 8' 10³/₈"



MAX DC COMMERCIAL

Application

- High ceilings
- Exposed alfresco
- Balconies

Min Mounting Height
Ideal Mounting Height
Max Mounting Height

2.4m, 7'10¹/₂"
2.5 - 2.8m, 8' 2¹/₂" - 9' 2¹/₄"
3m, 9'10"



ENHANCE WITH REMOTE & APP

Application

- Indoor / Outdoor
- Direct spot heating applications

Min Mounting Height
Ideal Mounting Height
Max Mounting Height

2.1m, 6'10³/₄"
2.3 - 2.5m, 7' 6¹/₂" - 8' 2¹/₂"
2.8m, 9' 2¹/₄"



INTENSE WITH REMOTE & APP

Application

- Under cover protected areas
- Semi-exposed outdoor locations

Min Mounting Height
Ideal Mounting Height
Max Mounting Height

2.1m, 6'10³/₄"
2.3 - 2.5m, 7' 6¹/₂" - 8' 2¹/₂"
2.8m, 9' 2¹/₄"



INTENSE WITH REMOTE & APP WHITE

Application

- Under cover protected areas
- Semi-exposed outdoor locations

Min Mounting Height
Ideal Mounting Height
Max Mounting Height

2.1m, 6'10³/₄"
2.3 - 2.5m, 7' 6¹/₂" - 8' 2¹/₂"
2.8m, 9' 2¹/₄"



WALL MOUNTED NATURAL GAS

Application

- Alfresco areas / hospitality
- Kitchen / patios / balconies / outdoor dining

Ideal Mounting Height
Max Mounting Height

2 - 2.7m, 6' 6³/₄" - 8' 10¹/₂"
2.7m, 8' 10¹/₂"



PORTABLE LPG

Application

- Portable spot heating / hospitality
- Kitchen / patios / balconies / outdoor dining

Heating Area

16m²





Decorative Modular Panels

5/16" Hardwood Composite | Outdoor & Indoor Use



Versatility

Endless options for decorative and practical applications that provide structure and privacy.

Durability

Sturdy 100% Australian hardwood, protected by Decoshield™ and a 10-year warranty.

Workability

Modular, pre-cut, ready-to-install quickly and easily in DIY and professional projects.

Sustainability

Responsibly harvested, carbon-neutral-milled timber with no synthetic additives.

Designability

Unique and distinctive patterns that create or enhance architectural features with the warmth and feel of timber.



48" x 70" Stonefield (top), 36" x 48" Paradise (bottom), 24" x 48" Star Anais (right)

Affordable, architectural-grade panels to enhance your outdoor & indoor living spaces

Beauty and durability

- 100% Australian hardwood with a natural timber look and feel
- Durable, sustainable hardwood composite made of 97% wood fiber
- Resistant to water, mold, mildew, termites
- 3 sizes and 22 decorative patterns
- Patterns are router-cut, not molded
- 10-Year Limited Warranty

Decorative and practical applications

- Gates, fences, walls, and free-standing frames
- Trash bins or pool & A/C equipment
- Balcony, planter, and bench perimeters
- Living garden walls & artistic focal points
- Interior art, arrangement, and privacy

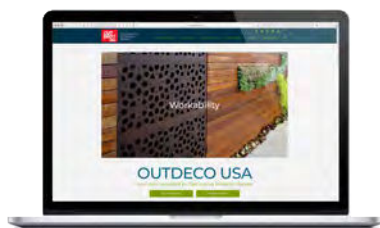
Finishing options

- Brown (48" x 70" & 24" x 48") or black (36" x 48") with Decoshield™ protective finish – requires no sealing, painting, or maintenance
- Accepts paint and finishes smoothly – add color or stain to suit your aesthetics
- Install lighting behind panels to add dimension

DIY Installation

- For DIY and professional projects
- Modular, pre-cut, and ready to install
- Installs easily using standard tools, hardware, and woodworking methods

Please visit us at outdecousa.com



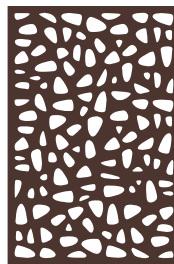
Design Galleries at outdecousa.com/galleries

Installation instructions, videos, and PDF guide at outdecousa.com/installation

Finishing instructions and PDF guide at outdecousa.com/finishing

5/16" Standard Modular Panels 3 Sizes | 22 Patterns | 3 Privacy Levels

48" x 70" x 5/16" Standard Panels – Brown



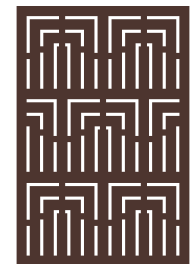
Stonefield
80% Privacy



Blossom
80% Privacy



Daintree
80% Privacy



Empire
80% Privacy



Savannah
90% Privacy



Orient
90% Privacy



Monsoon
90% Privacy



Solid Panel
100% Privacy

24" x 48" x 5/16" Standard Panels – Brown



Leafstream
60% Privacy



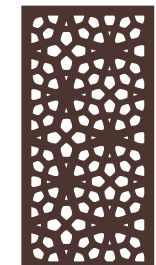
Mahjong
60% Privacy



Bungalow
80% Privacy



Herringbone
80% Privacy



Marakesh
80% Privacy



Nest
80% Privacy



Wooloomai
80% Privacy



Cumulus
90% Privacy

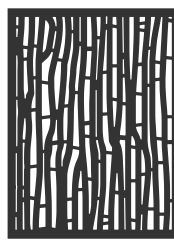


Star Anais
90% Privacy



Solid Panel
100% Privacy

36" x 48" x 5/16" Standard Panels – Black



Hana
80% Privacy



Paradise
80% Privacy



Wildflower
80% Privacy



Leafspray
90% Privacy

10-Year Limited Warranty OUTDECO USA panels carry a Material Warranty of 10 years. 10 YEAR WARRANTY covers OUTDECO USA panels against material rot, bloat, or delamination under normal outdoor atmospheric and moisture "run-off" conditions. Installations are the responsibility of the installer. These directions must be followed for the warranty to be valid. OUTDECO USA's hardwood panels must be mounted in a vertical plane, and must not be submerged or in constant contact with water, soil or chemicals. Material Warranty valid within USA and Canada. The benefits to the consumer given by this warranty are in addition to and not in conflict with all other rights and remedies of the consumer under a law in relation to the goods or services to which the warranty relates.

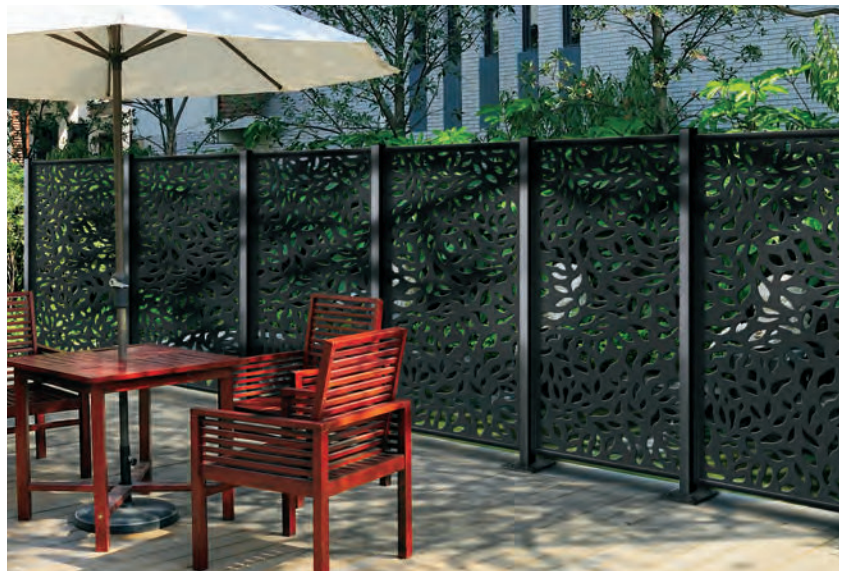


Post & Frame Installation System

Galvanized Steel for Panel & Horizontal Fencing



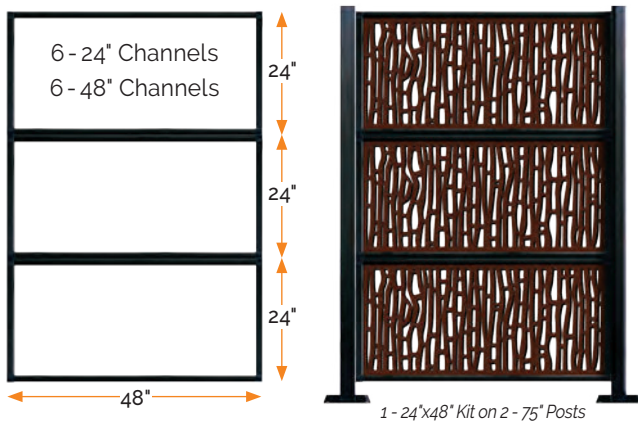
Precise, integrated fencing installation. No measuring.



Panel Frame Kits for Design-Vu & Modinex Privacy Panels

- Channels assemble into panel frames: 24" x 48" Kit holds 3 panels, 36" x 72" Kit holds 1 panel.
- Channels screw into pre-drilled posts.
- Channel slots allow 1" vertical adjustment for uneven surfaces. Can be attached to existing flat surfaces.
- Kits include:** Frame Channels, Corner Connectors, Panel Locking Pins, Screws, and a drill bit

24" x 48" Panel Frame Kit (ODCC24)



36" x 72" Panel Frame Kit (ODCC36)



Posts

52" & 75" Surface-Mount and 96" In-Ground

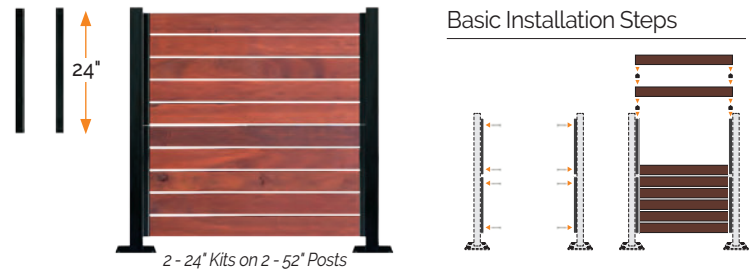
- Black powder-coated galvanized steel
- 52" & 75" Surface-Mount posts have welded base plates; 96" In-Ground post sets in cement.
- Pre-drilled post holes align with slots in Panel and Slat Kit channels for installation with no measuring.
- Posts include:** Post top caps and hole plugs; 52" & 75" posts include wood & masonry screws.



Horizontal Slat Fence Kits for 24" and 72" Horizontal Slat Fencing

- Kit channels hold 24" and 72" total slat heights and adjust for slats 1/2" to 1" thick.
- Channel slots align with pre-drilled holes on posts. Can be attached to existing flat surfaces.
- Poly Slat Spacers create consistent 1/2" spacing between slats without measuring; can be stacked for additional 1/2" spacing.
- Channels can attach to walls, fences, and other flat surfaces.
- Kits include:** Channels, Slat Spacers, Screws, and a drill bit

24" Horizontal Slat Fence Kit (ODSL2)



72" Horizontal Slat Fence Kit (ODSL6)



OUTDECO Post & Frame Program

ITEM	PRODUCT #
24" x 48" Panel Frame Kit (for Modinex and Design-VU Decorative Panels)	ODCC24
36" x 72" Panel Frame Kit (for Modinex and Design-VU Decorative Panels)	ODCC36
24" Horizontal Slat Fence Kit	ODSL2
72" Horizontal Slat Fence Kit	ODSL6
52" Surface-Mount Post	ODP55
75" Surface-Mount Post	ODP75
96" In-Ground Post	ODP96
1/2" Slat Spacers, 24-Pack	ODSP24
Decorative Panel Timber Screws, 10-Pack (for Design-VU 36" x 72" Panels)	ODSC10

OUTDECO Post & Frame System has a **5-Year Limited Warranty**. (See outdecousa.com.)



Decorative Modular Panels

3'x6' Black Galvanized Steel for Outdoor & Indoor

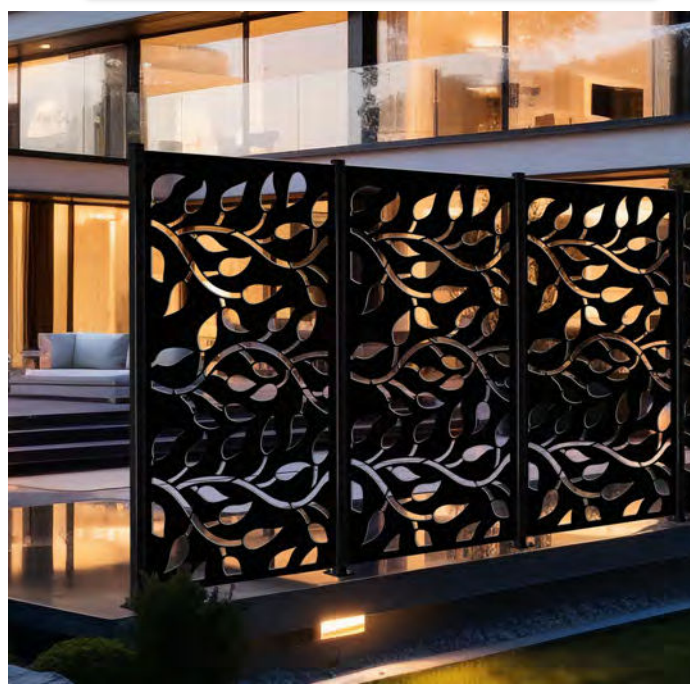


Galvanized Steel Panels with Black Powder-Coat finish for dual protection against all outdoor elements.

Engineered to be quickly and easily installed on Outdeco posts.

Precisely laser-cut and offered in six distinctive design patterns.

Maintenance free and long-lasting.



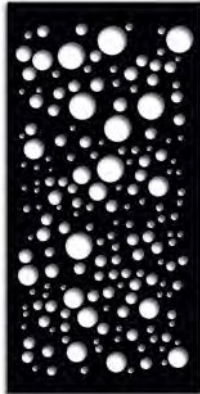


Decorative Modular Panels

3'x6' Black Galvanized Steel for Outdoor & Indoor



Tangle
60% Privacy
(ODMET36-004)



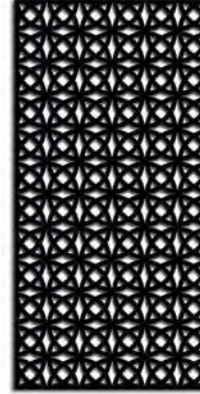
Galaxy
60% Privacy
(ODMET36-003)



Rainforest
75% Privacy
(ODMET36-001)



Spiral
70% Privacy
(ODMET36-005)



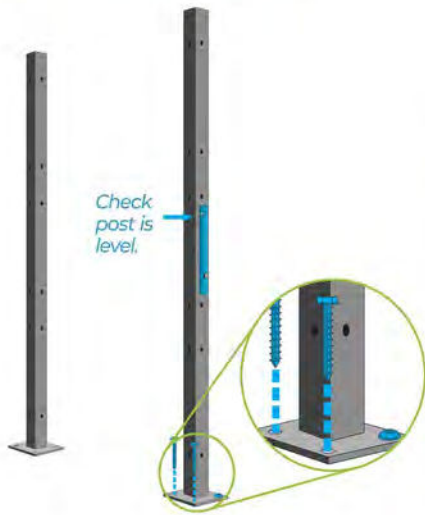
Orbit
75% Privacy
(ODMET36-006)



Leaf
70% Privacy
(ODMET36-002)

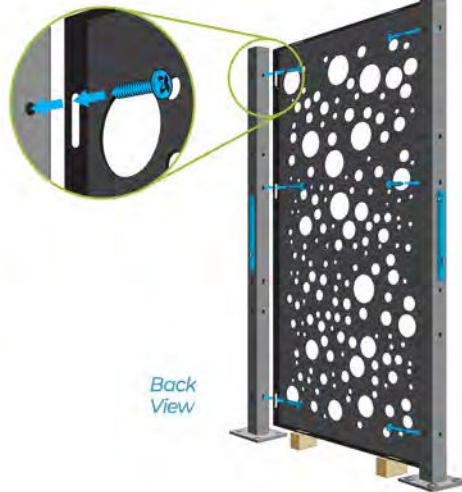
Easy Installation

1. Install 1st Post*



2. Attach Panel

Screw through sides of Panel into both Posts.



3. Install 2nd Post

Check that Posts are level. Bolt down 2nd Post.



NOTE: Installation requires 2 people. Detailed instructions included.

IMPORTANT!

Follow detailed instructions included with Panels and Posts.

* Posts Sold Separately

75"
Above
Ground
Post
(ODP75)

96"
In-ground
Post
(ODP96)

Decorative Steel Privacy Panels | Indoor/Outdoor



Dramatic steel design.
Rustic authenticity.



Rich colors. Rustic style. Long-lasting architectural décor.

- Decorative laser-cut patterns add flair and privacy in outdoor environments.
- Striking, sophisticated designs create wall art for interior spaces.
- Durable, maintenance-free, 1mm thick Corten steel.
- OXY-SHIELD's specially formulated surface oxidizes to create a beautiful rust finish without degrading the steel.
- Earthy, rustic patina of blended red, brown, and orange tones enriches over time.
- The rustic effect accelerates if sprayed regularly with a fine mist of water. No additional maintenance required.
- Install easily using standard tools. Hardware included.
- Panels engineered for easy yet solid installation on OUTDECO Steel Posts in vertical and horizontal structural orientations.
- For DIY and professional projects.

LOCATION WARNING: Rust run-off can stain concrete, pavers, walls and surrounding areas. Do not install panel in contact with any aluminum or zinc surfaces. See installation information at outdecousa.com/oxy-shield-panels.

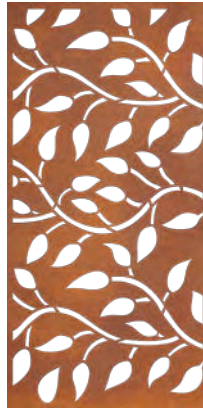
15-Year Limited Warranty

OUTDECO USA warrants to the original purchaser that our panels will be free of structural faults due to defects in manufacturing for a period not exceeding 15 years from date of purchase. This limited warranty does not cover damage resulting from misuse or from improper storage, handling, or installation. See full warranty at outdecousa.com/oxy-shield-panels.

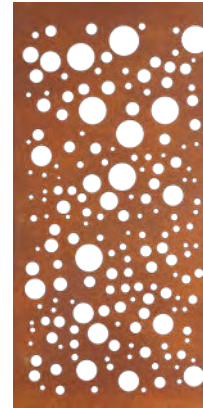
See our Design Galleries and find installation instructions at outdecousa.com



36" x 72" x 3/4" Corten Steel Panels 5 Laser-Cut Patterns | 4 Privacy Levels



LEAF
70% Privacy
(OXY002)



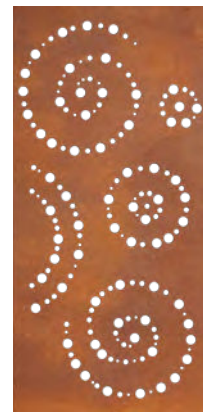
GALAXY
70% Privacy
(OXY003)



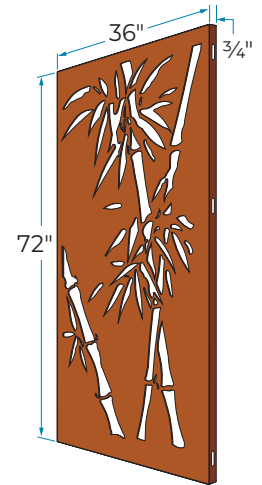
RAINFOREST
75% Privacy
(OXY001)



BAMBOO
80% Privacy
(OXY004)



SPIRAL
85% Privacy
(OXY005)

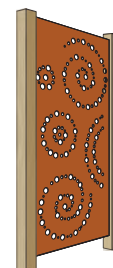


Easy Installation

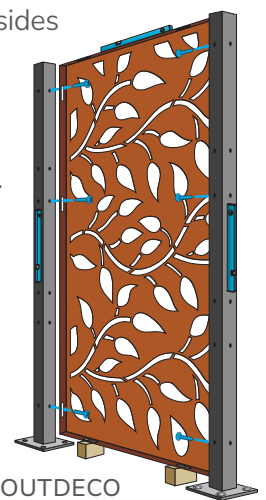
- Panels are engineered with slots on all four sides which align with pre-drilled holes on OUTDECO Steel Posts*.
- Panels can be installed in vertical or horizontal orientations on OUTDECO Posts*.
- Panels can also be installed on 4" x 4" timber posts or hung on walls or fences.



Wall or Fence
Direct-Mount



On 4" x 4" x 75"
Timber Posts



On OUTDECO
75" Posts

Post & Frame
Components*

75" Surface-Mount Post (ODP75)
96" In-Ground Post (ODP96)

* Sold separately.



SCAN TO VISIT US ONLINE!